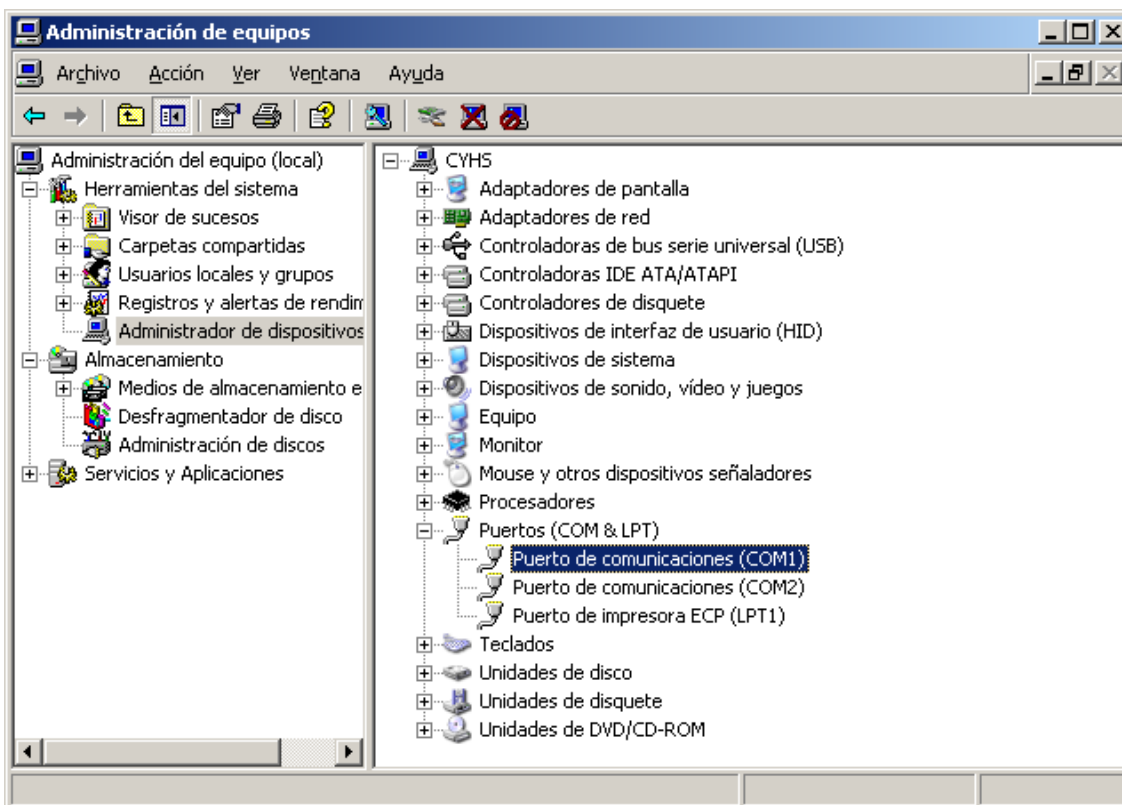
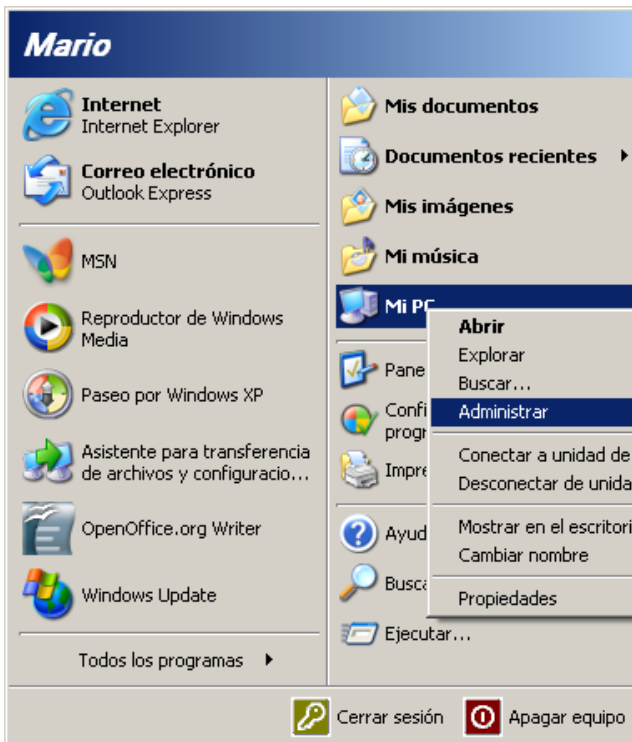
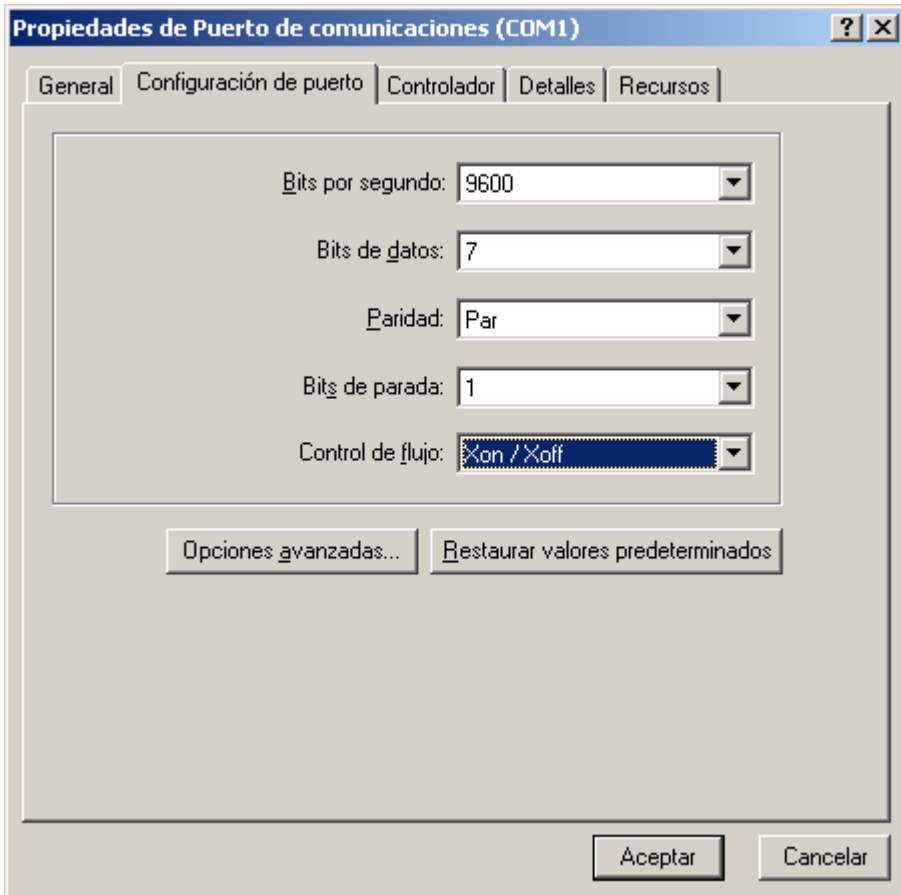



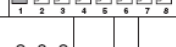
Puertos Serie Configurar





Top Bank Switch Number

OFF 


ON 

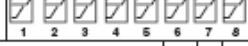
0 = OFF
1 = ON

Baud Rate Selection							
19,200	0	0	0				
9,600*	1	0	0				
4,800	0	1	0				
2,400	1	1	0				
1,200	0	0	1				
38,400	1	0	1				
57,600	0	1	1				
reserved	1	1	1				
Parity Selection							
Even*				0	0		
Odd				1	0		
None				0	1		
None				1	1		
Number of Data Bits							
7 Bit*						0	
8 Bit						1	
Reserved							0 0

Default settings are noted with an *

Bottom Bank Switch Number

OFF 

ON 

0 = OFF
1 = ON

Multi-Drop Address Selection							
*A	0	0	0	0	0		
B	1	0	0	0	0		
C	0	1	0	0	0		
D	1	1	0	0	0		
E	0	0	1	0	0		
F	1	0	1	0	0		
G	0	1	1	0	0		
H	1	1	1	0	0		
I	0	0	0	1	0		
J	1	0	0	1	0		
K	0	1	0	1	0		
L	1	1	0	1	0		
M	0	0	1	1	0		
N	1	0	1	1	0		
O	0	1	1	1	0		
P	1	1	1	1	0		
Q	0	0	0	0	1		
R	1	0	0	0	1		
S	0	1	0	0	1		
T	1	1	0	0	1		
U	0	0	1	0	1		
V	1	0	1	0	1		
W	0	1	1	0	1		
X	1	1	1	0	1		
Y	0	0	0	1	1		
Z	1	0	0	1	1		
0	0	1	0	1	1		
1	1	1	0	1	1		
2	0	0	1	1	1		
3	1	0	1	1	1		
4	0	1	1	1	1		
5	1	1	1	1	1		
Protocol Selection							
XON/XOFF*						0	
Intermec Protocols						1	
XON/XOFF Selection							
No Status Response*						0	
With Status Response						1	
Media Type							
Direct Thermal*						0	
Thermal Transfer Ribbon						1	

Default settings are noted with an *

Explanation of Serial Ports:

<http://www.moderncontroltechnology.com/docs/CyHStar.Mexico/Intermec/PuertosSerie.htm>